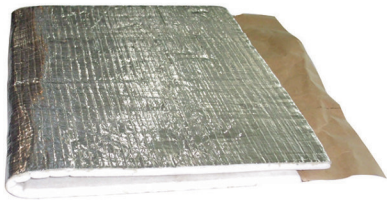


Thermal defense wrap for high insulation and temperature stability



Cable tray application in wall



Cable tray application in floor

2
Products

ASSESSMENT/APPROVAL

British Standard

BS 476 - 20

BS EN 1366-3

BS EN ISO 10140-3:1995

ADVANTAGES

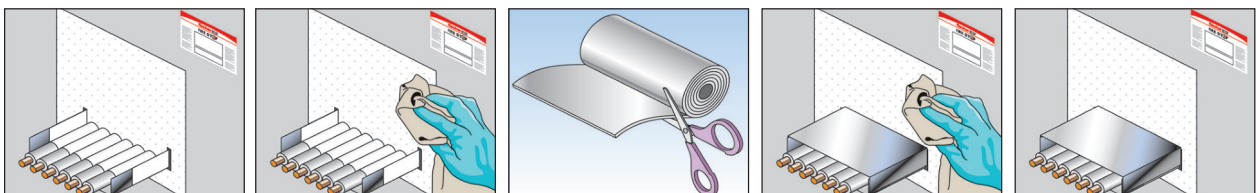
- Remains flexible -10 to +160
- Low VOC
- High insulation and temperature stability
- Pre-formed 300 mm roll
- Fast and efficient installation
- Remains flexible without aging

APPLICATIONS

- Metallic services with steel and cast iron pipes
- General construction joints: wall to floor to head of wall
- Drywall partitions, connections
- FCPS joints

FUNCTIONING

- TDW is ceramic-based technology of bio-soluble vitreous fibres and flexible organic builders, and has been designed to maintain the compartmentalisation of a fire-rated assembly.
- The unique design of the TDW allows for movement of services, maintain the necessary insulation of the services and prevents temperature, rise of the services at the cold face. At normal temperature the TDW remains flexible and permits thermal and mechanical movement.
- It provides up to 2 hours integrity and insulation.



INSTALLATION

1. Clean all contact surfaces so they are free from loose debris and contaminants such as oil, dirt, grease, wax, old sealant, etc.
2. Measure and mark the TDW to the required service configuration.
3. Cut TDW as per requirements with a standard pair of scissors or snips.
4. Wrap TDW around service configuraion and apply alufoil tape to secure in place.

SPECIFICATIONS

| Item | Art.-No. | Dimensions [mm] | Sales unit [pcs] |
|--------------|---------------|--------------------|---------------------|
| TDW 1 | 531398 | 300 x 15,000 | 1 |

TECHNICAL DATA

| | |
|--------------------------|--|
| Odor and appearance | White, fibrous material with aluminium foil face |
| Chemical family | Calcium magnesium silicate fibres |
| Boiling point | N/a |
| Water solubility (%) | Less than 1 mg/l > 1200 °C |
| Relative density | 180Kg/m ³ - 250Kg/m ³ |
| Alufoil thickness | 0.25 mm normal |
| Dimension (thickness mm) | 6 |
| Size (width x length mm) | 300 x 15,000 long roll or 1,200 x 500 sheet |
| Shelf life | 36 months (under recommended conditions) |
| Storage temperature | -5 °C to +25 °C |
| Colour | White, silver |